

## CMC40H22... Support Channel

### Overview:

#### Application

Used for suspending lighting, as part of the assembly, and as construction element for installing cable trays, ladders, and Brackets WW, WWS, WS, WSZ, WZS, WWC, WWCN, WMC, WMCN, WPL, WWD, WPT, WTL, and WWT.

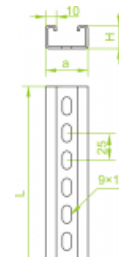
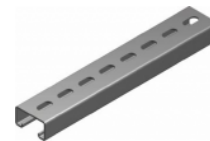
#### Material

Steel, strip-galv. acc. to the Sendzimir method to PN-EN 10346:2011 (SG)

#### Available to order:

F- steel, hot-dip galv. to PN-EN ISO 1461:2011 (HDG)  
 L- powder coating in a full range of colours (PC)

**Important! In case of large quantity orders available are any sections up to 6m long. For the assembly of support channel in combination with channel connector use Screw Sets SGK M8x14 or SG M8x14**



### Versions:

Sheet thickness: **2,0 mm**

Symbol	Length L [m]	Width a [mm]	Catalogue number	Quantity in box	Height H [mm]	Weight 1 pc.
CMC40H22/2	2000	40	612620	8	22	3,12
CMC40H22/3	3000	40	612630	8	22	4,68

### Connected products:



PZC... Assembly Plate



NO40x20 Protective Cap



NO40x47 Protective Cap



NOK... Protective Cap



NO80x37 Protective Cap



TSO... Galvanised Steel Tape



DSO... Galvanised Steel Wire



NO30x30 Protective Cap



NO40x40N Protective Cap



NO40x60 Protective Cap



DPH... I-Beam



NO40x30 Protective Cap



NO50x30 Protective Cap